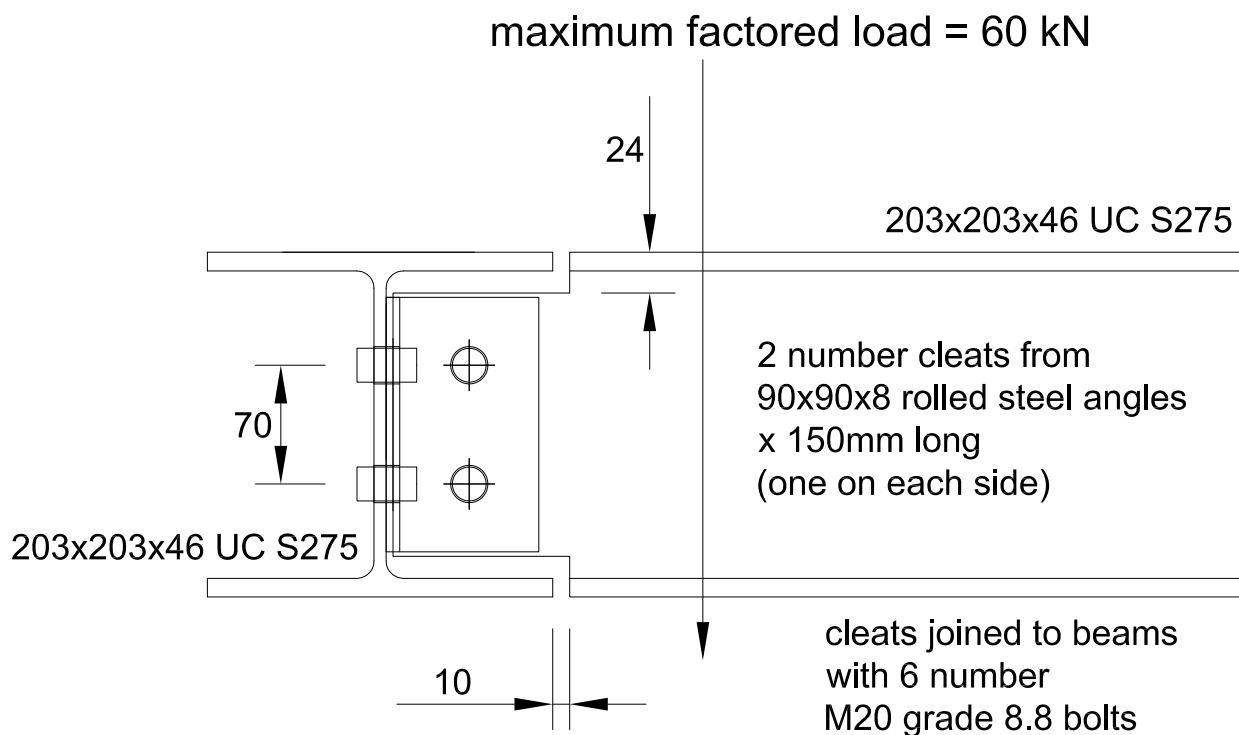


## Connection Detail 203x203x46 UC



Bearing Capacity of M20 bolt passing through 7.2mm thick S275 steel = 60.6 kN

$2 \times 60.6 \text{ kN} = 121.2 \text{ kN} > 60 \text{ kN}$  therefore OK

Shearing Resistance of M20 grade 8.8 bolt = 188 kN

$2 \times 188 \text{ kN} = 376 \text{ kN} > 60 \text{ kN}$  therefore OK

Values from P363 Steel Building Design: Design Data, In accordance with Eurocodes and the UK National Annexes.