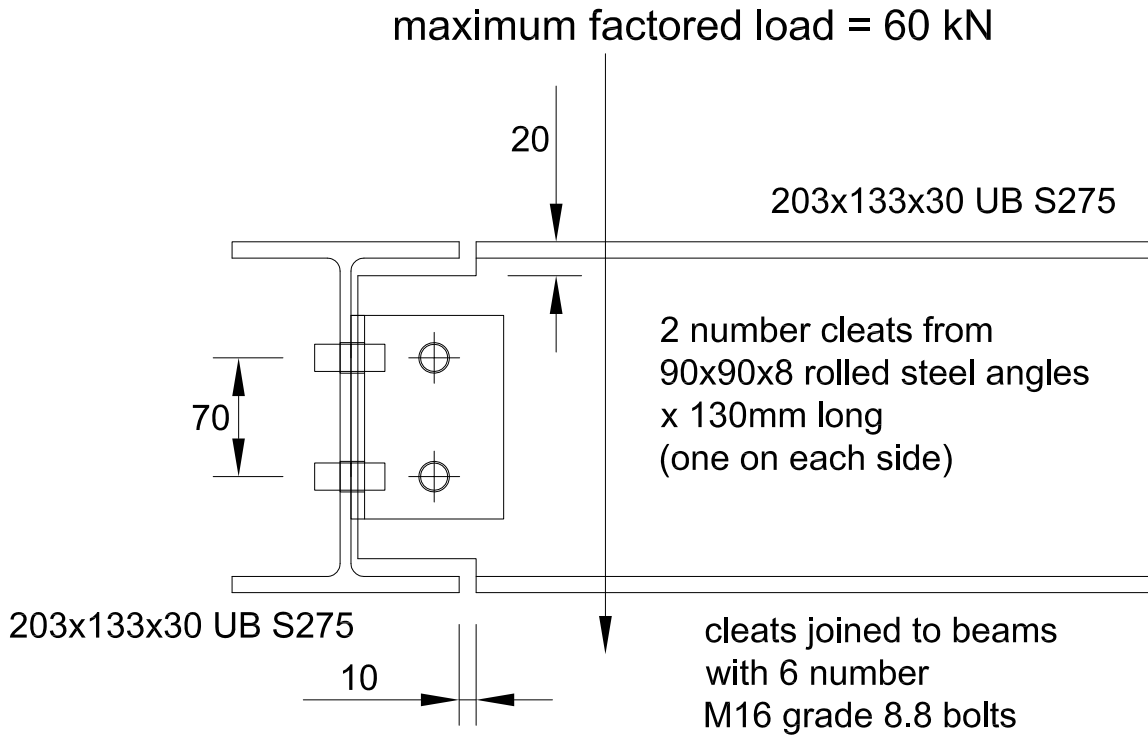


## Connection Detail 203x133x30 UB



Bearing Capacity of M16 bolt passing through 5.4mm thick S275 steel = 43.6 kN

$2 \times 43.6 \text{ kN} = 87.2 \text{ kN} > 60 \text{ kN}$  therefore OK

Shearing Resistance of M16 grade 8.8 bolt = 60.3 kN

$4 \times 60.3 \text{ kN} = 241.2 \text{ kN} > 60 \text{ kN}$  therefore OK

Values from P363 Steel Building Design: Design Data, In accordance with Eurocodes and the UK National Annexes.