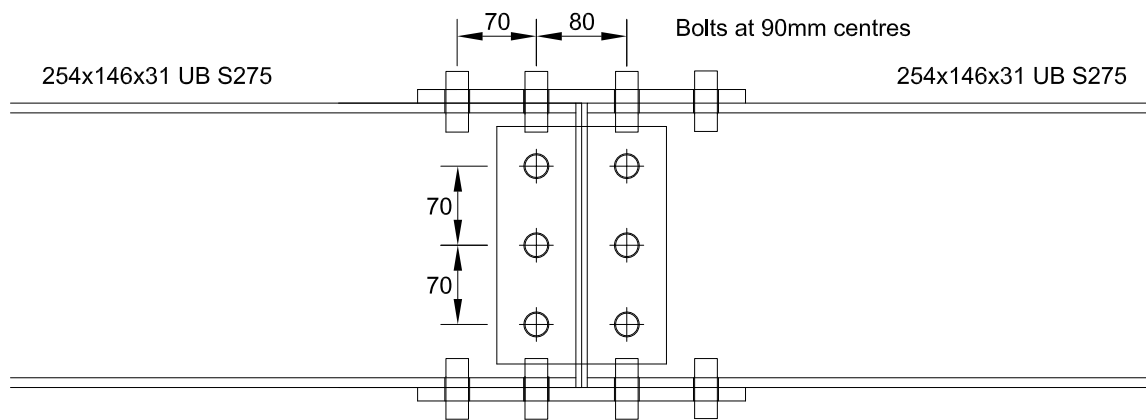


## Splice Connection Detail 254x146x31 UB

maximum factored bending moment = 45 kNm  
maximum factored shear = 25 kN



M20 HR8.8 Preload bolts (HSFG Type) throughout

150x290x8mm S275 steel flange plates

150x210x8mm S275 steel web plates both sides of web

Flange Bolts Shear Resistance

$$0.7 \times 800 \times 245 \times 0.45/1.25 \times 4/10^3 = 197.6 \text{ kN}$$

$$45 \times 10^3 / (251.4 + 8) = 173.5 \text{ kN} < 197.6 \text{ kN therefore OK}$$

Web Bolts Shear Resistance

$$0.7 \times 800 \times 245 \times 0.45/1.25 \times 3/10^3 = 148.2 \text{ kN}$$

$$25 \text{ kN} < 148.2 \text{ kN therefore OK}$$